

CISP457 Practice Midterm Examination 1

Prof. Tak Auyeung

September 22, 2003

Instructions: You may bring any material that is handwritten or printed *prior* to the examination to help you. You can also bring a calculator if you think it may help you. However, you can only use the calculator for numerical computations only. You *cannot* let your calculator compile a program, or to communicate with others.

You, as an individual, are expected to do your own work. This means you cannot seek, receive or otherwise acquire any assistance except clarifications from the professor during an examination. Any communication involving the contents of the subject matter or the examination is considered cheating. Do not initiate or accept such communication, or the result of your examination is automatically voided.

New rules, read this! As of 2003.09.22, I no longer deduct points for wrong answers. Each correct answer is worth one point, each wrong answer is worth zero point, and each unanswered question is also worth zero point. This means you *should* guess and leave no question unanswered.

As a result, I also need to adjust the letter grade assignment break points. For your individual examination, “A” means at least 90%, “B” means at least 70%, “C” means at least 50%, “D” means at least 30% and “F” means below 30%. The break points for the final grade are now 24.16%, 45.83%, 67.50% and 89.16% as minimums for “D”, “C”, “B” nad “A”, respectively.

Please note that this change does not affect your letter grade at all, it is just a number game to make some people feel better about guessing.

Make sure you write down you name on the upper right corner *first*, otherwise I cannot give points to anonymous students!

The baseline is XX, there are YY questions.

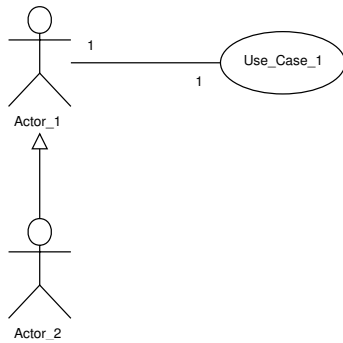
1 Which of the following can be the description of a use case?

- A registered card holder
- B credit card invoice
- C pay credit card bill
- D card holder Bill Payne
- E press button to log in

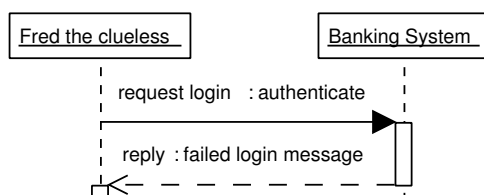
2 Which relationship can exist between an actor and a use case?

- A generalization
- B inclusion
- C extension
- D message passing
- E association

3 Which statement is not true for the following diagram?



- A Actor_2 generalizes Actor_1
 - B Actor_1 can use Use_Case_1
 - C Actor_2 can use Use_Case_2
 - D Actor_2 serves no purpose
 - E all other options are true
- 4 Which of the following not true for an object in a sequence diagram?
- A it must be external to the information system
 - B it must not be a classification
 - C it is represented by a rectangle
 - D it can originate messages
 - E it can receive messages
- 5 Which of the following does not need to know the system specifications?
- A systems analysts
 - B programmers
 - C technical trainers
 - D quality assurance team
 - E all the other choices need to know the system specifications
- 6 Which of the following can be captured by tools and diagrams for capturing functional requirements?
- A cumulative cost
 - B relationships among actors and use cases
 - C expected annual growth percentage
 - D delivery date
 - E none of the above can be captured by tools and diagrams for capturing functional requirements
- 7 What/who is “Fred the clueless” in the following sequence diagram?



- A an actor
- B an object

- C an action
 - D a use case
 - E a message
- 8 What is not true about the initial cost to design, develop and deploy an information system?
- A it is not sensitive to inflation
 - B it is difficult to estimate (relative to operation costs)
 - C it has much impact to cash-flow analysis, especially for organizations with limited cash
 - D all of 8a, 8b and 8c are not true
 - E all of 8a, 8b and 8c are true
- 9 Which of the following is not true about the total of all “tangible benefits” of an information system?
- A it has a dollar-amount
 - B it is relative to another information system
 - C it *always* determines revenue
 - D 9a and 9b
 - E all of 9a, 9b and 9c
- 10 Which of the following is not a requirement of an actor in a use case diagram?
- A it must participate in at least one use case
 - B its description is not an action
 - C it is a classification, not an instance/object
 - D it cannot be the system being modeled
 - E all other options are requirements of an actor
- 11 Which of the following is not a component in a use case diagram?
- A an actor
 - B a use case
 - C the generalization relationship
 - D the inclusion relationship
 - E all the other options are components in a use case diagram
- 12 Which of the following is *not* described/represented in a sequence diagram?
- A the order in which messages are passed
 - B the originator and receiver of a message
 - C the logic of processes
 - D objects that are involved
 - E dispatch actions associated with messages
- 13 There are four actors in a use case diagram, what is the *maximum* number of use cases?
- A 1
 - B 2
 - C 3
 - D 4
 - E cannot be determined

- 14 Who determines (not document) system requirements? In other words, who reviews and approves documents of system requirements?
- A systems analysts
 - B programmers
 - C client
 - D testers
 - E system administrators
- 15 Systems analysts maintain system specifications. Who can potentially be affected by changes in the specifications?
- A programmers
 - B testers (QA)
 - C technical writers
 - D programmers and technical writers
 - E programmers, testers and technical writers may be affected